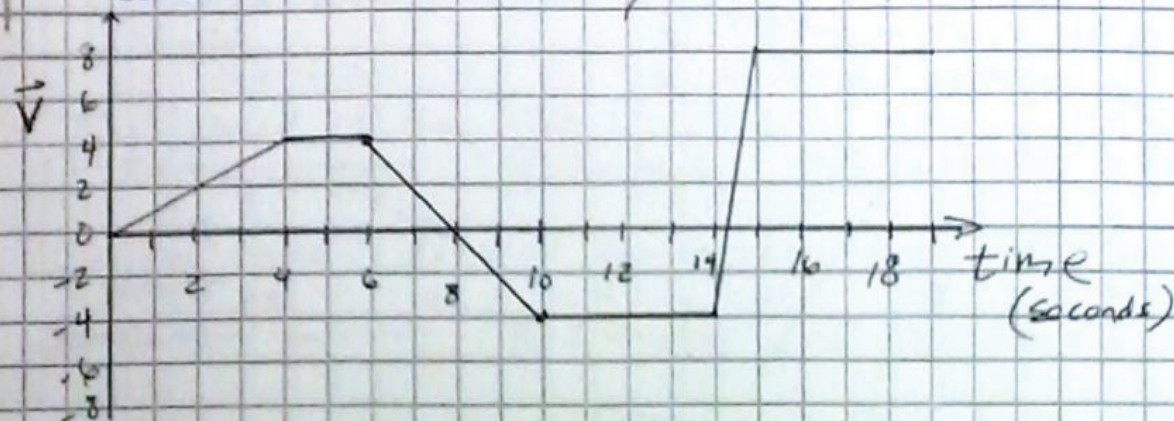


# Review Packet C Velocity vs. Time Graphs

Semester 1

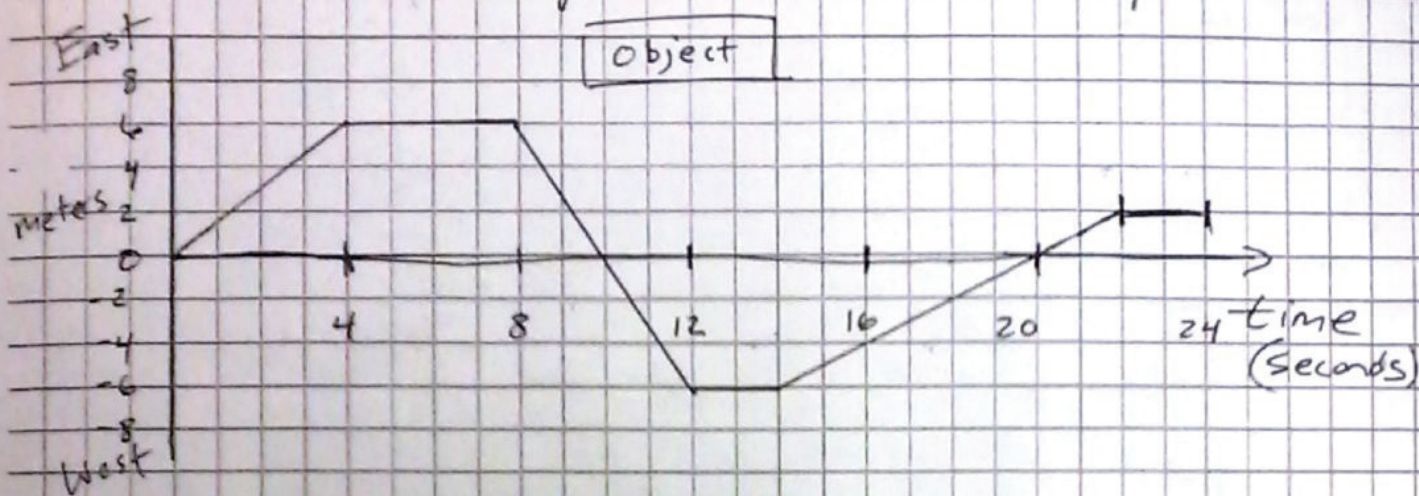


- ① What is the total displacement between 0 & 8 seconds?
- ② What is the total displacement between 6 & 8 seconds?
- ③ What is the total displacement between 6 & 10 seconds?
- ④ What is the displacement between 0 & 14 seconds?
- ⑤ What is the distance traveled between 0 & 14 seconds?
- ⑥ What is the displacement between 16 & 18 seconds?



## Displacement vs. Time Graphs

object



① What is the velocity from 0 to 4 seconds?

② What is the velocity from 4 to 8 seconds?

③ What is the displacement from 4 to 8 seconds?

④ What is the displacement from 0 to 4 seconds?

⑤ What is the velocity from 8 to 12 seconds?

⑥ What is the velocity from 14 to 16 seconds?

⑦ What is the distance traveled from 8 to 12 seconds?

⑧ During which period(s) of time was the object ~~stationary~~ stationary?